

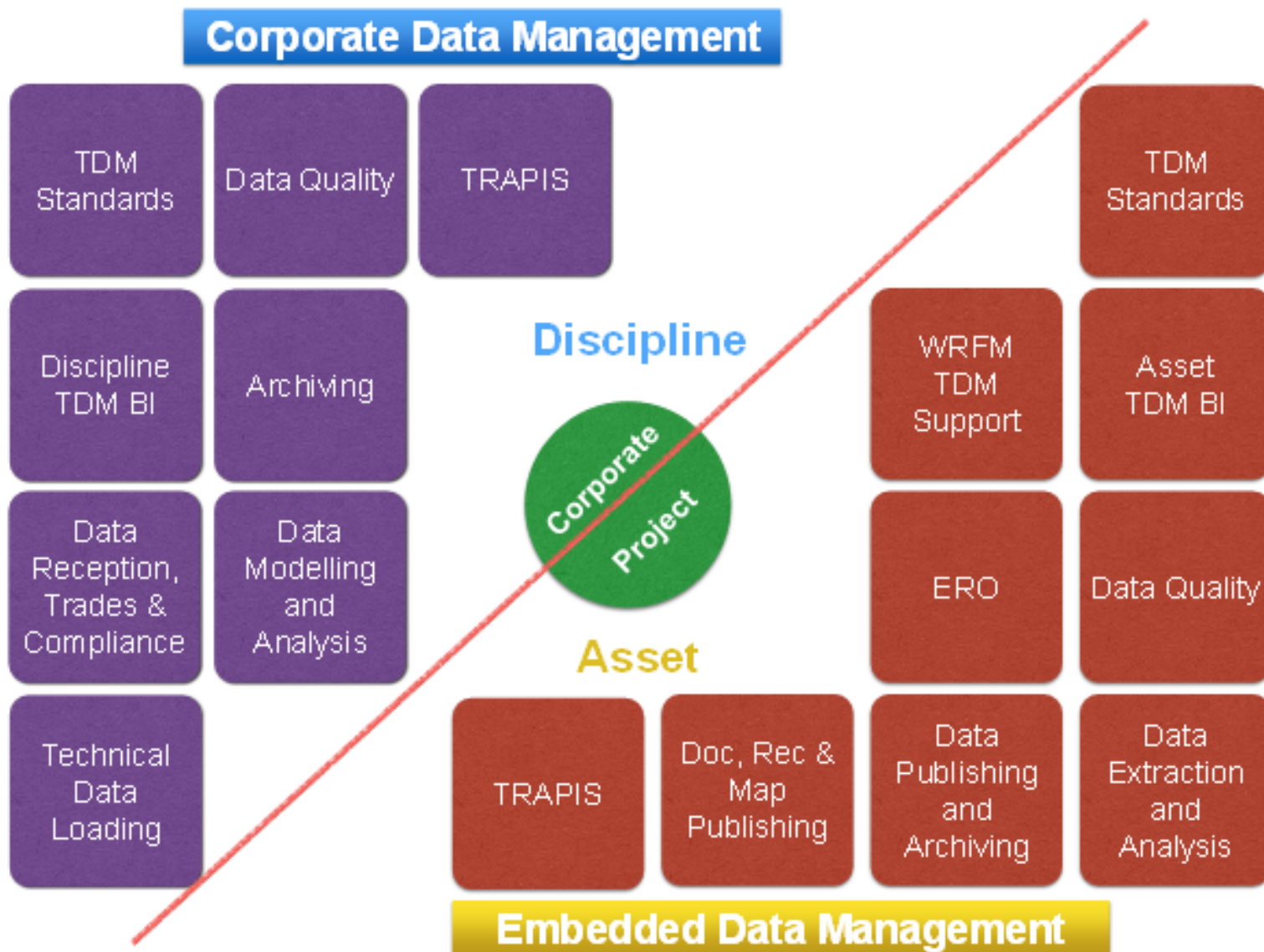
Integrating surface and subsurface data in a 'COMPOSITE MAP' using Spotfire

Ahmad Faid Ismat / Jamre Ismail

Production Geoscience Technical Data Management



Background



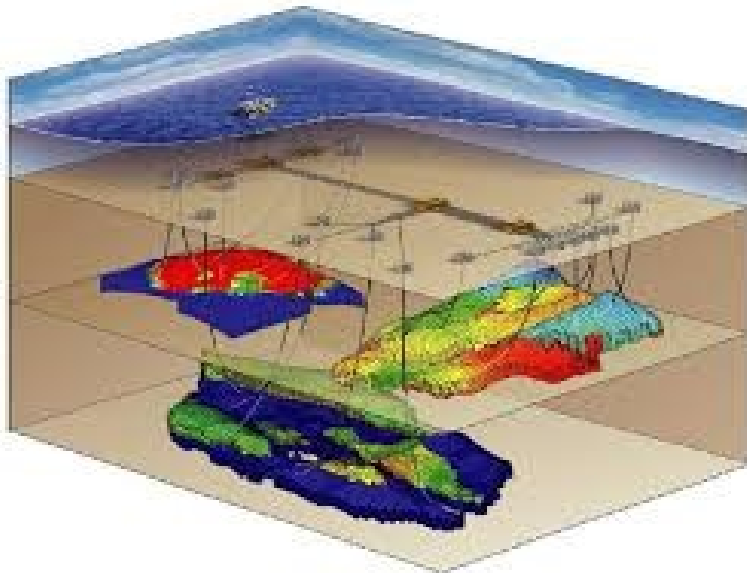
How it get started

- Preparation for Reservoir Performance Review (RPR) took **THREE** weeks or more
- Low Oil Price = **Competitive scoping**

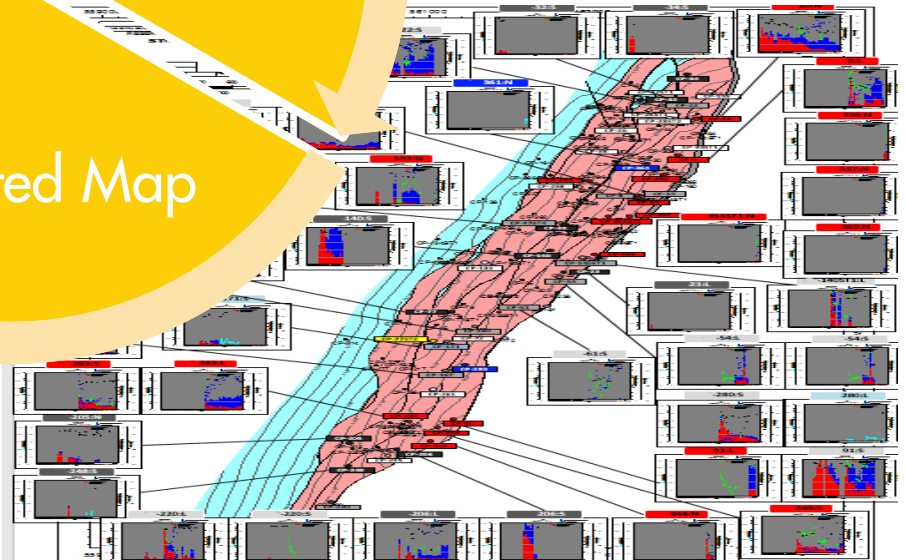
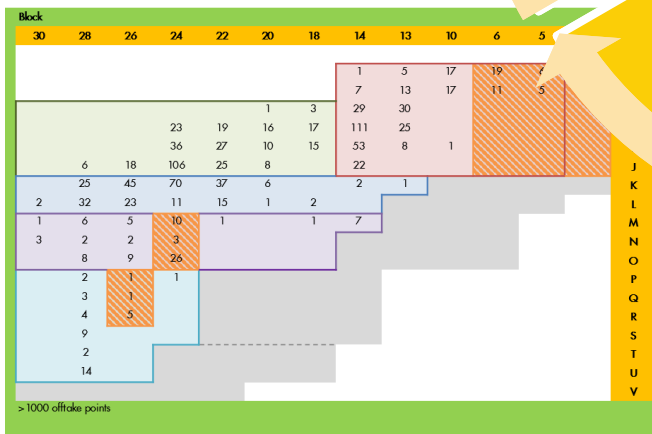
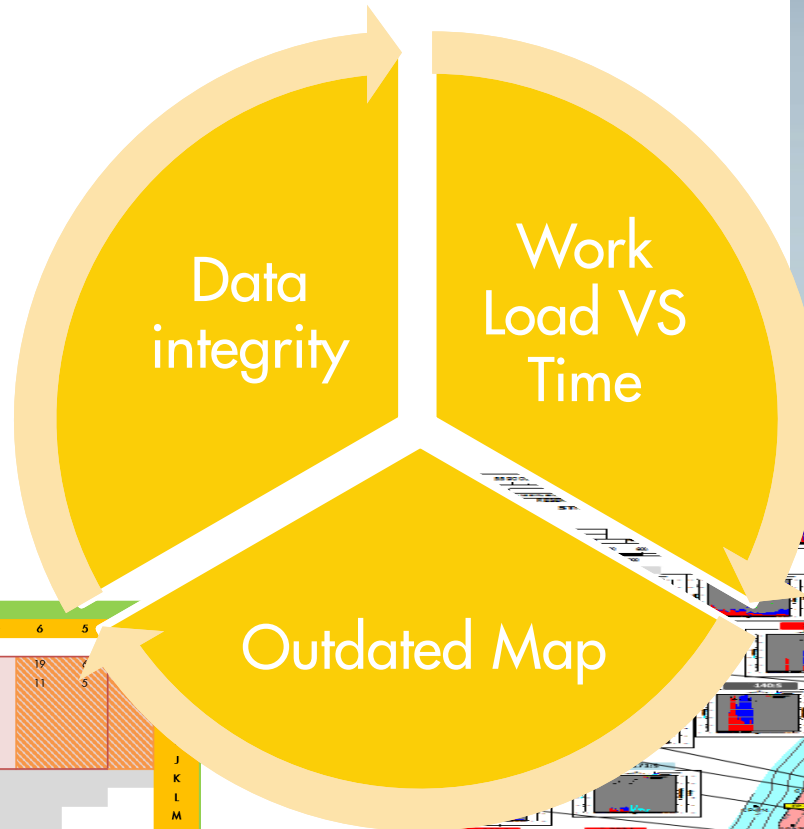
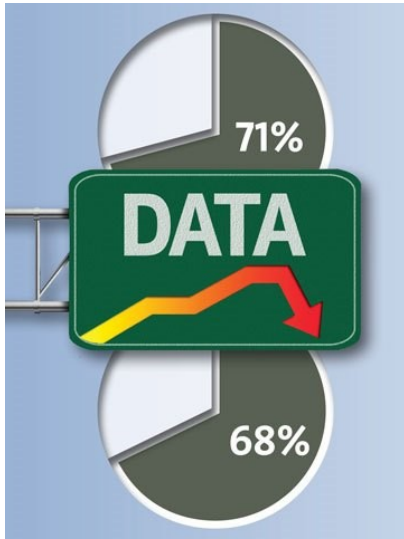


Why is it important

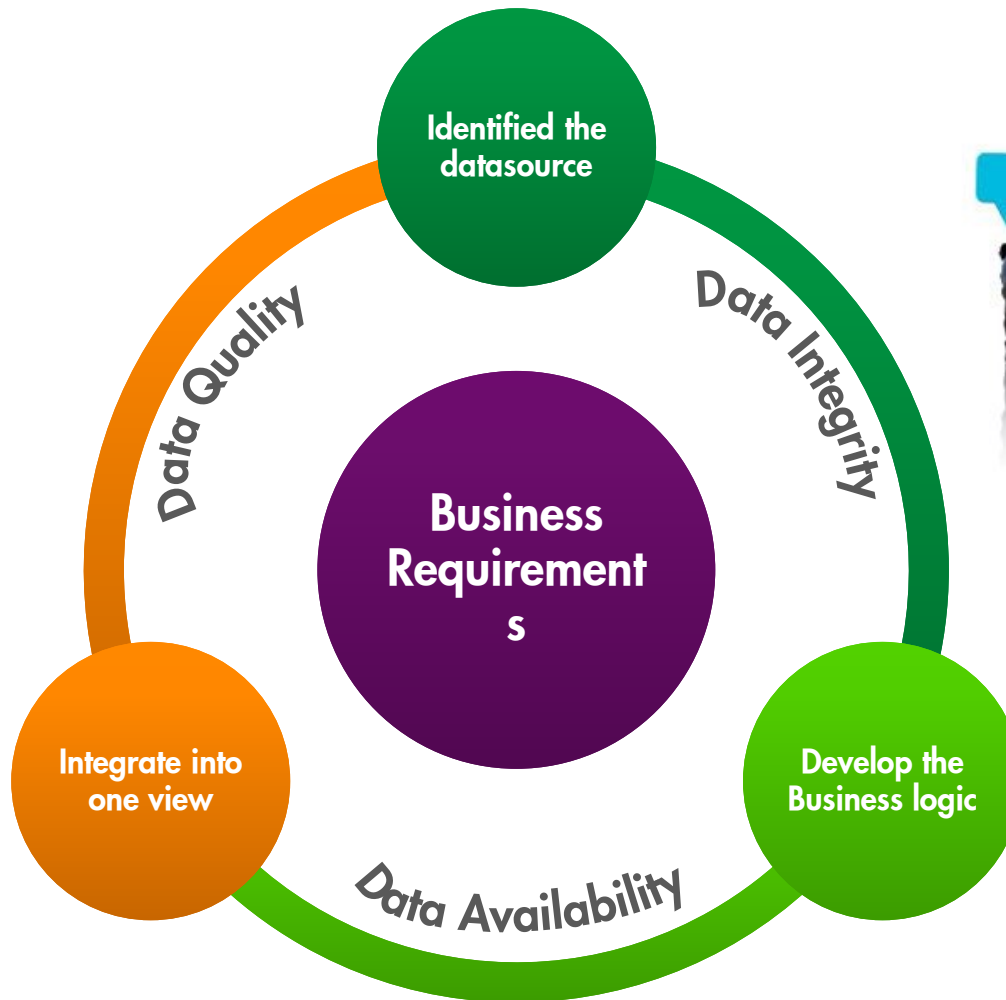
- Reservoir Performance Review
 - Understanding of our Reservoir
 - Opportunity Register
 - Reservoir Forecast



What are the challenges



Investigating the issues





COMPOSITE MAP

Welcome Page

Welcome Composite Map Completion Matrix

Welcome!

This Template was created to support Reservoir Performance Review(RPR) process. All of the data are up to date since it is link directly to database except map.

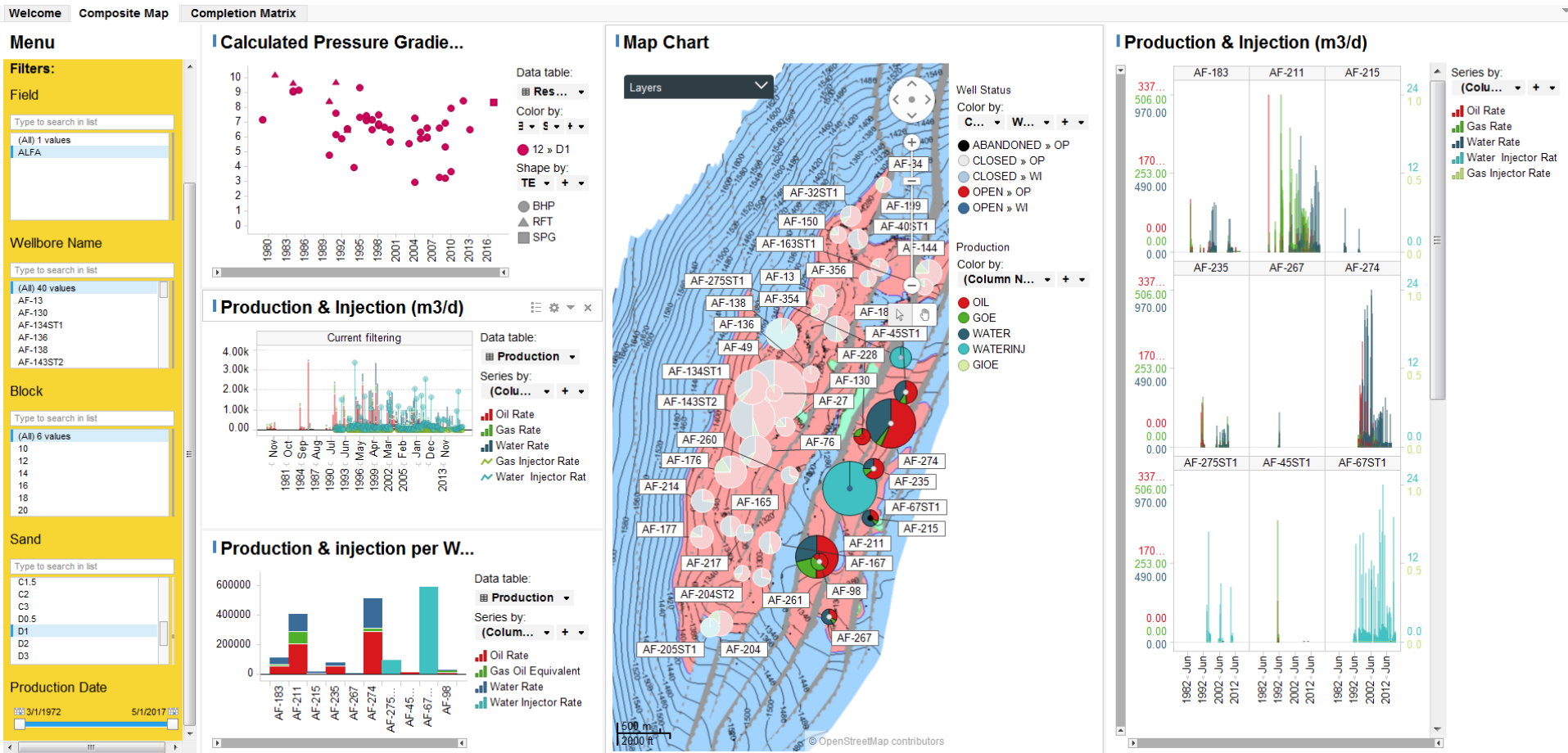
Data source

Attributes	Database
Map	PETREL
Production data	EPBASE
Reservoir pressure gradient (BHP & RFT)	CDS
Well location	CDS
Well Test	EC
Well Status (Conduit status)	EC

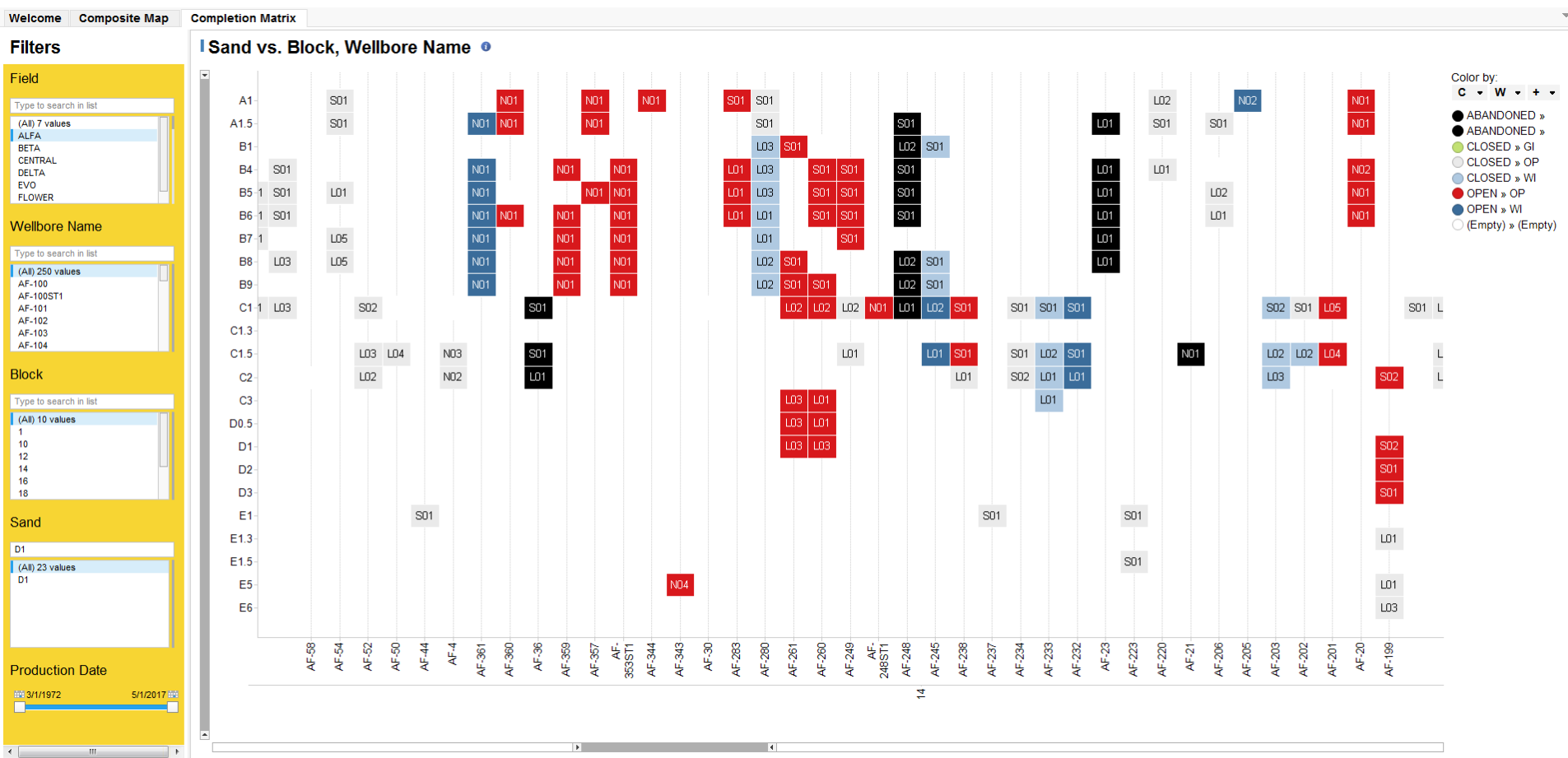
Contact Person

Data and Template related - Ahmad Faid Ismat - CDM/72

Composite Map



Completion Matrix





Business Value

Business Value

HSE

- Improve data integrity



Non-technical

- Save 120 man hours on preparation
- Save cost on resources
- Lean process



Technical

- Interactive display
- Live data from corporate database
- Better decision making





Achievement

2017 BI 1000 MD Award



***This is a large step forward in how we can be more efficient in using the data that is already at our finger tips by employing CDM experts and not just manually downloading/manipulating. Like I said, excellent work and a step change i.e. data managers managing data providing petroleum engineers more time to interpret it!
Marden, Roy Graham BSP-EPE/12***





Q&A

